



# Specifics of crossing the Russian-Belorussian border for citizens of third countries

12 December 2017



# Specifics of crossing the Russian-Belorussian border for citizens of third countries (1)



November 2017

**Clarification on the order of crossing of the state border between Russian Federation and Republic of Belarus (approved by FSB of Russia) 14.11.2017**



Citizens of third countries arriving to Russia from Republic of Belarus are prohibited from use of train and car as means of crossing the Russian border. Only direct flights between Russia and Republic of Belarus are allowed.

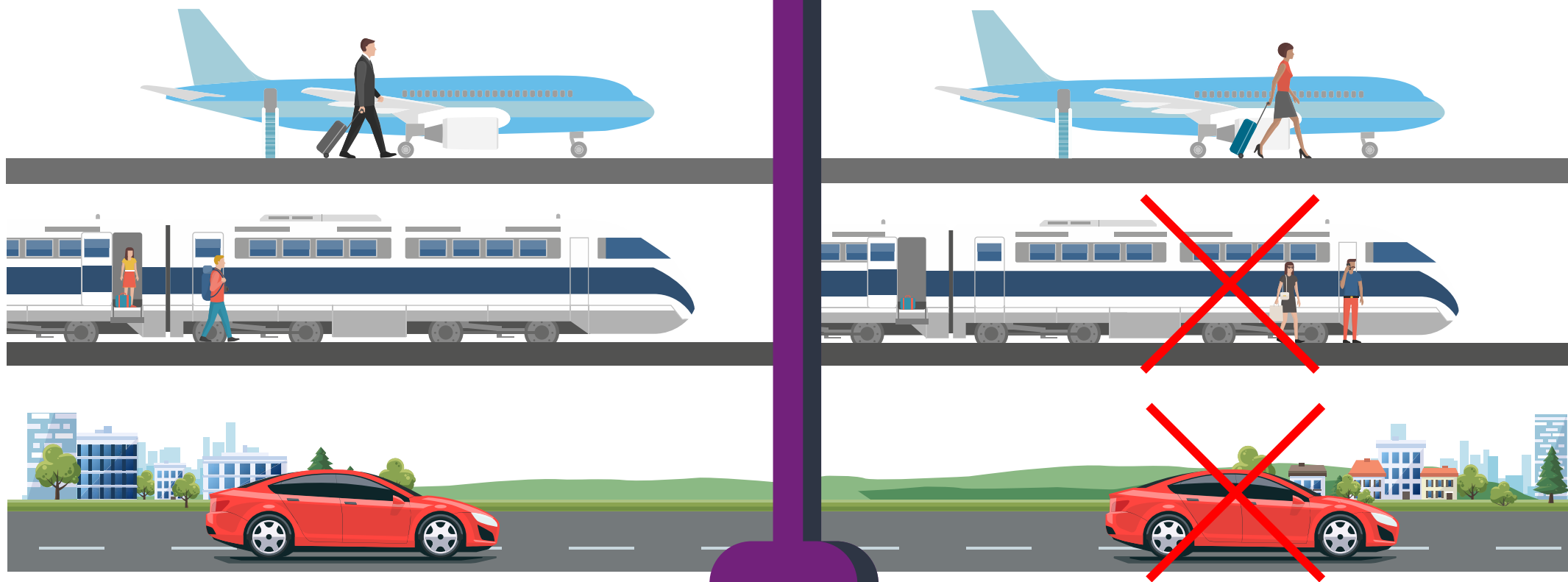


# Specifics of crossing the Russian-Belorussian border for citizens of third countries (2)



Before 14.11.2017

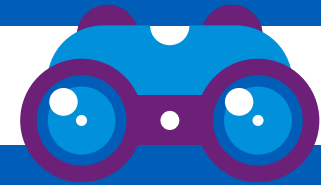
After 14.11.2017



# Specifics of crossing the Russian-Belorussian border for citizens of third countries (3)



## CONCLUSIONS



**Citizens of third countries arriving to Russia from Republic of Belarus after 14.11.2017 should use only direct flights between Russia and Republic of Belarus. Any other means of transport used will be classified as a violation. The liability for this can be not only an administrative penalty but also further prohibition from entry to Russia.**



**To receive, to complete and to seal migration card on the passport control upon the arrival to Russian airport. This helps to avoid troubles when making the migration registration in Russia.**



Thank you!

Maxim Novikov, Senior Manager, People Department