



# Health& Safety program in Mercedes-Benz Russia

Nikolay Tenshov, OHSE team leader  
March,17 2017

Mercedes-Benz  
The best or nothing.



# Content

- Intro
- Integrated management system
- Health program
- Health & Sport activities

# Daimler AG in Russia

Mercedes-Benz Cars	Mercedes-Benz Vans	Mercedes-Benz Trucks	Daimler Buses	Daimler Financial Services
				
				
<p><b>Mercedes-Benz Russia AO</b> Moscow / Nizhniy Novgorod / Yaroslavl 100% Daimler AG</p>		<p><b>Daimler KamAZ RUS 000</b> 50% Daimler AG / 50% KamAZ</p> <p> Since 2015 within DK RUS</p> <p></p>		<p><b>Mercedes-Benz Financial Services 000</b></p>
 <p>The best or nothing.</p>	 <p>Mercedes-Benz Vans. Born to run.</p>	 <p>Mercedes-Benz Trucks you can trust.</p>	 <p>Mercedes-Benz This standard for buses.</p>	<p><b>Mercedes-Benz Bank RUS 000</b></p>
			<p><b>EvoBus Russland 000</b></p>	<p><b>Mercedes-Benz Capital RUS 000</b></p>
				<p>Mercedes-Benz Financial</p>
				<p>Mercedes-Benz Bank</p>

# Mercedes-Benz: More than 20 exciting years of history in Russia

Established in 1994, Mercedes-Benz Russia has celebrated its 20<sup>th</sup> anniversary with...

Over 1 300 employees in wholesale & retail locations

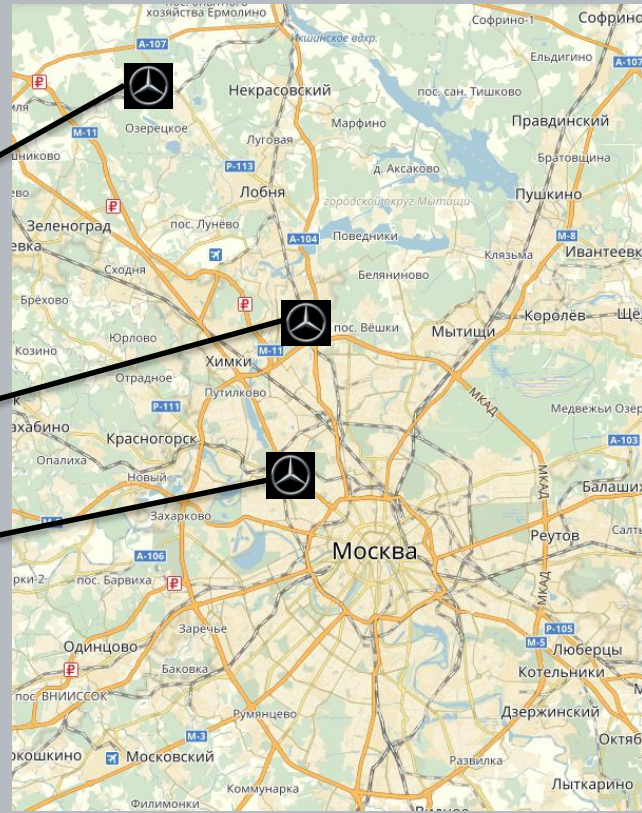
**Glazovo Logistics Center**



**MPC & Own Retail in Veshki**



**MPC & Own Retail in MB Plaza**

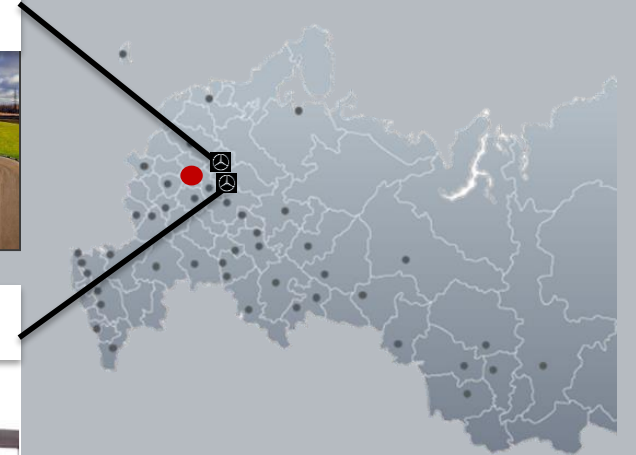


Over 60 employees in Nizhniy Novgorod and Yaroslavl

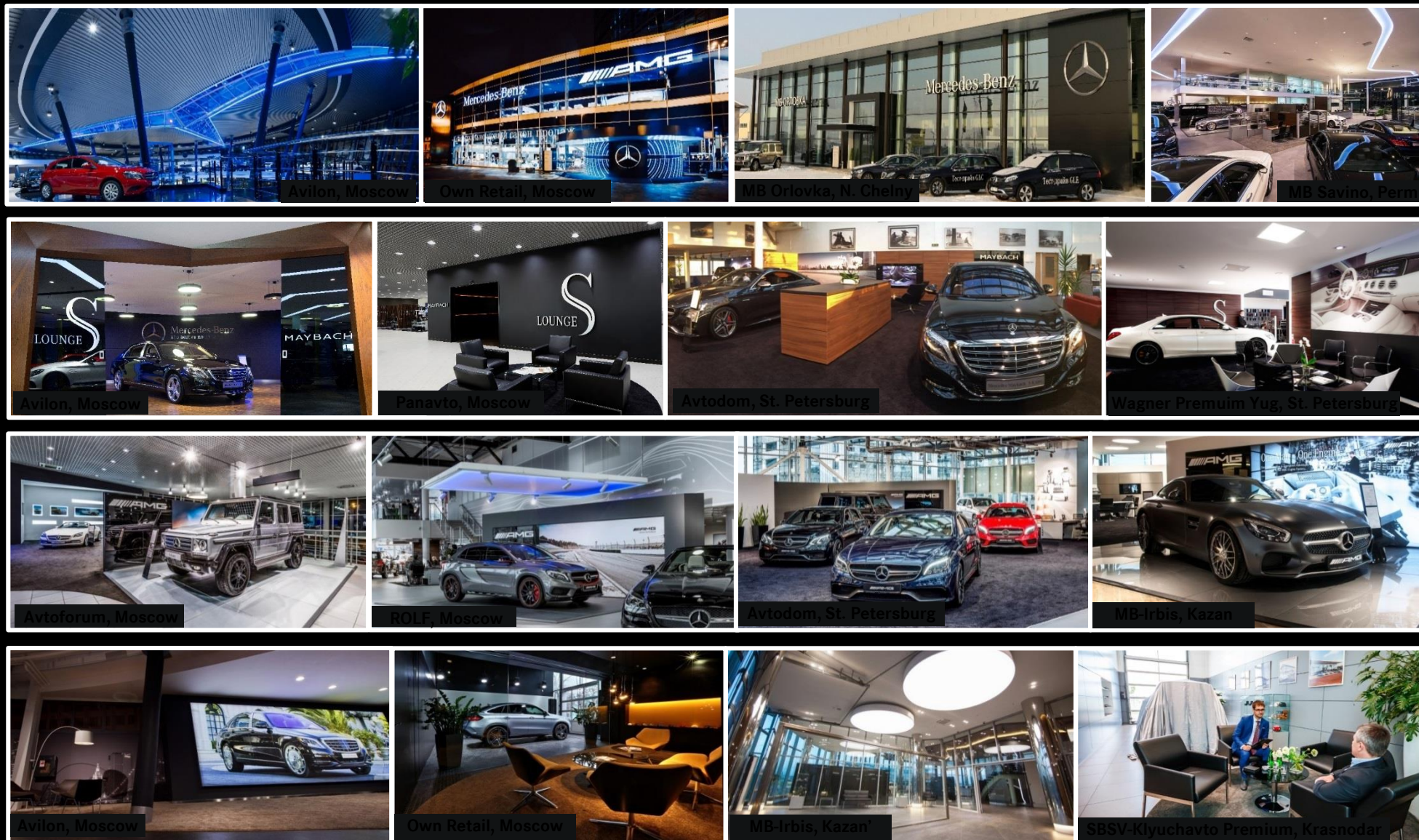
**Engine production - Yaroslavl**



**Sprinter Classic (T1N) Production – Nizhniy Novgorod**



# Our retail network reflects the “Modern Luxury” Brand principle



# Integrated management system (IMS)

- Integrated management system is a single system incorporating the requirements of three auditable international standards.

MB Russia integrated systems include a combination of:

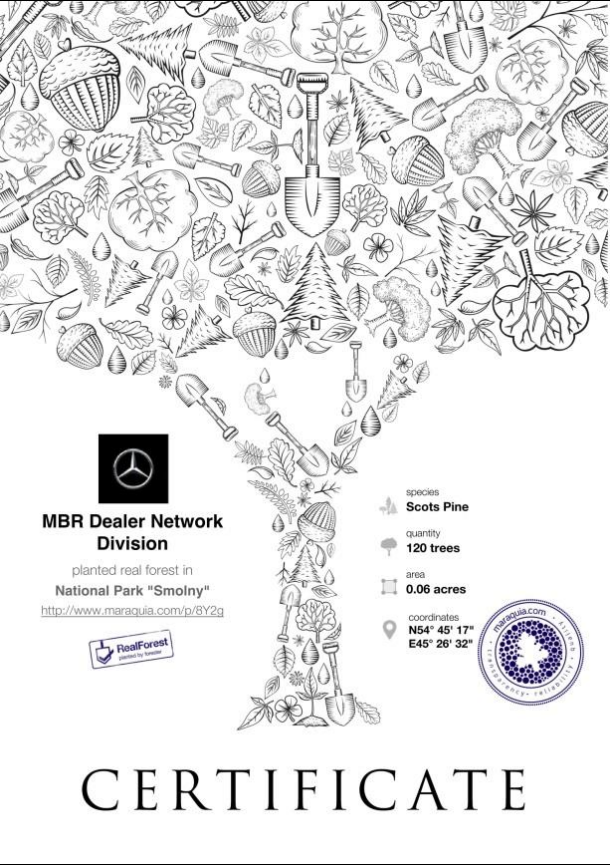
- Quality Management (QM - ISO 9001)
- Environmental Management (EM - ISO 14001)
- Occupational Health & Safety Standard (OHSAS 18001)

# Environmental Protection – a Part of fairplay campaign



# Divisions Eco-Race “Go Green”

Certificate of remote tree  
planting of 120 trees



Quantity of Divisions	Employees' amount in the Division	Amount of waste paper boxes	Collected waste paper, in cu.cm.	Collected waste paper calculated for 1 employee, in cu.cm	Amount of saved trees
11	1 345	180	13 246 000	236 157	36



Winner received a test-drive of smart  
electric-drive for 1 month

# Health program

- Medical cabinet
- Professional medical examination
- Pretrip medical examination of drivers
- First aid kits
- Vaccination against influenza
- Health programs support



# Blood donation

- Conducted on the site early
- up to 60 participants



# Alcohol abuse program

- Policy
- Communication
- Info booklets distribution



# Football& Ice Hockey

- Long term rent of sport field
- All season sport field rent (indoor)
- Weekly (once a week)
- Time of training 2 hours

